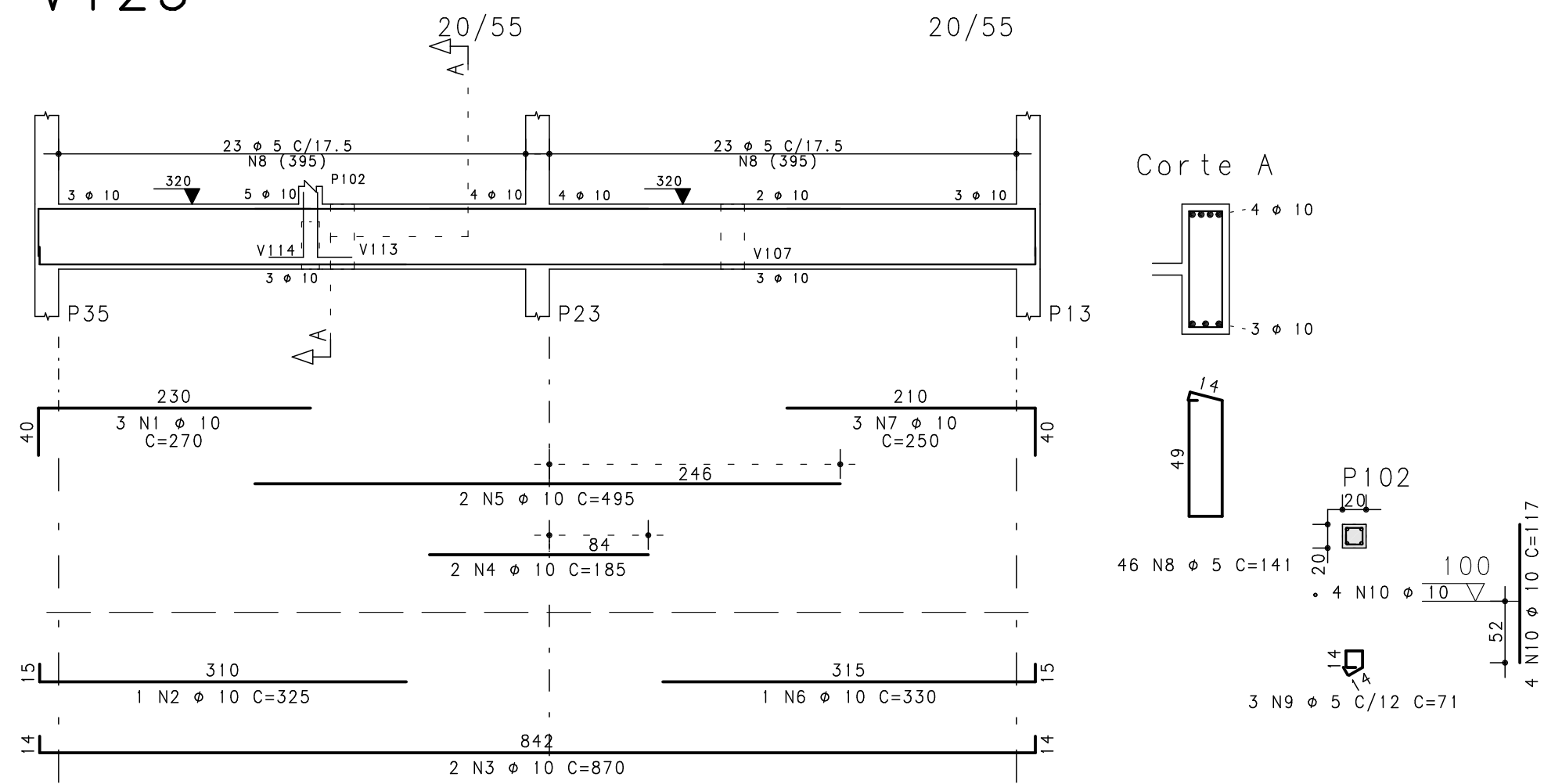
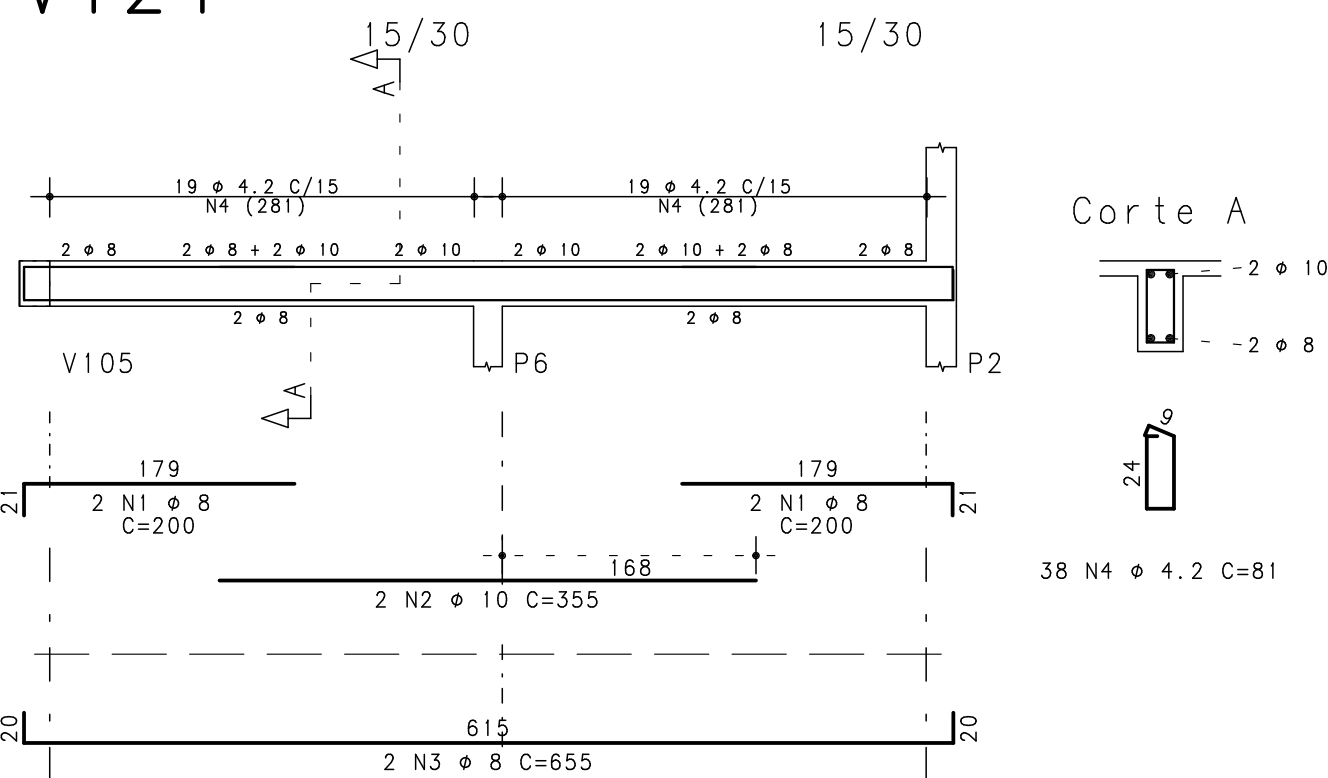


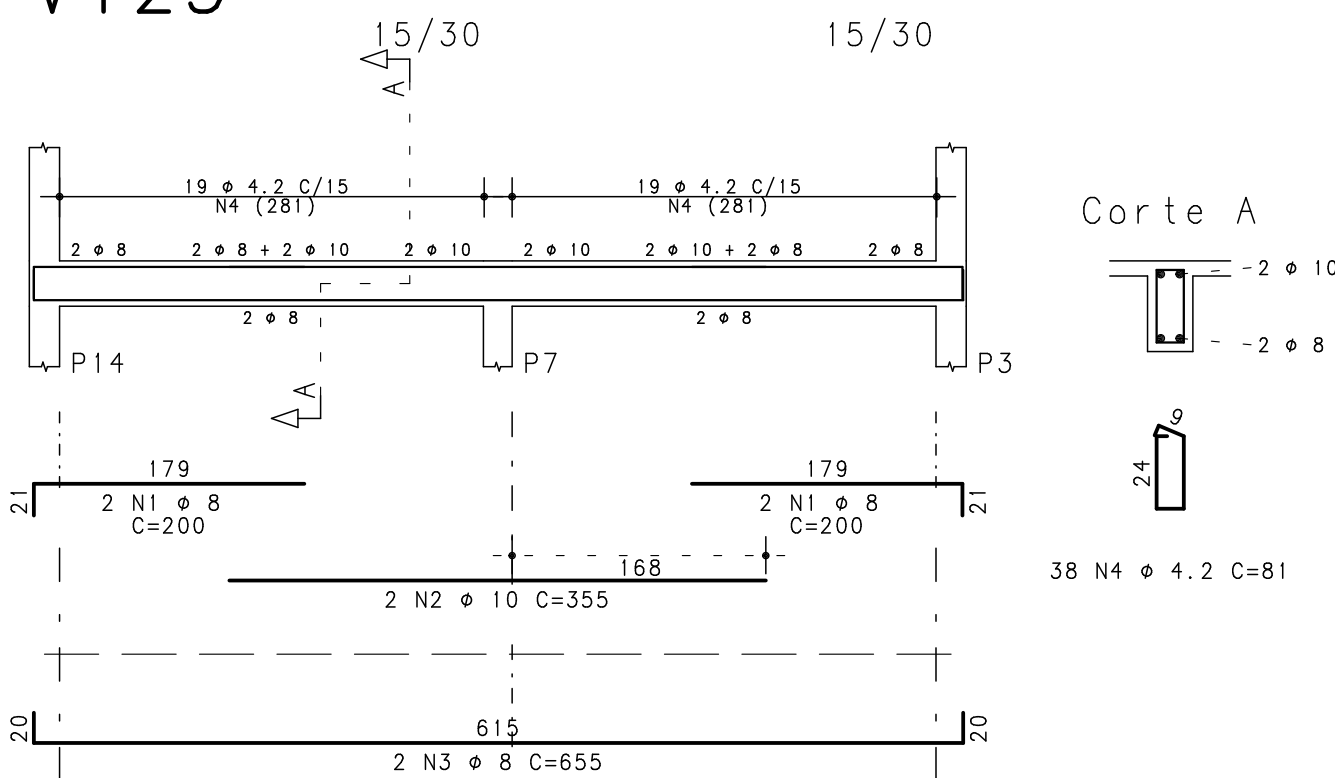
V123



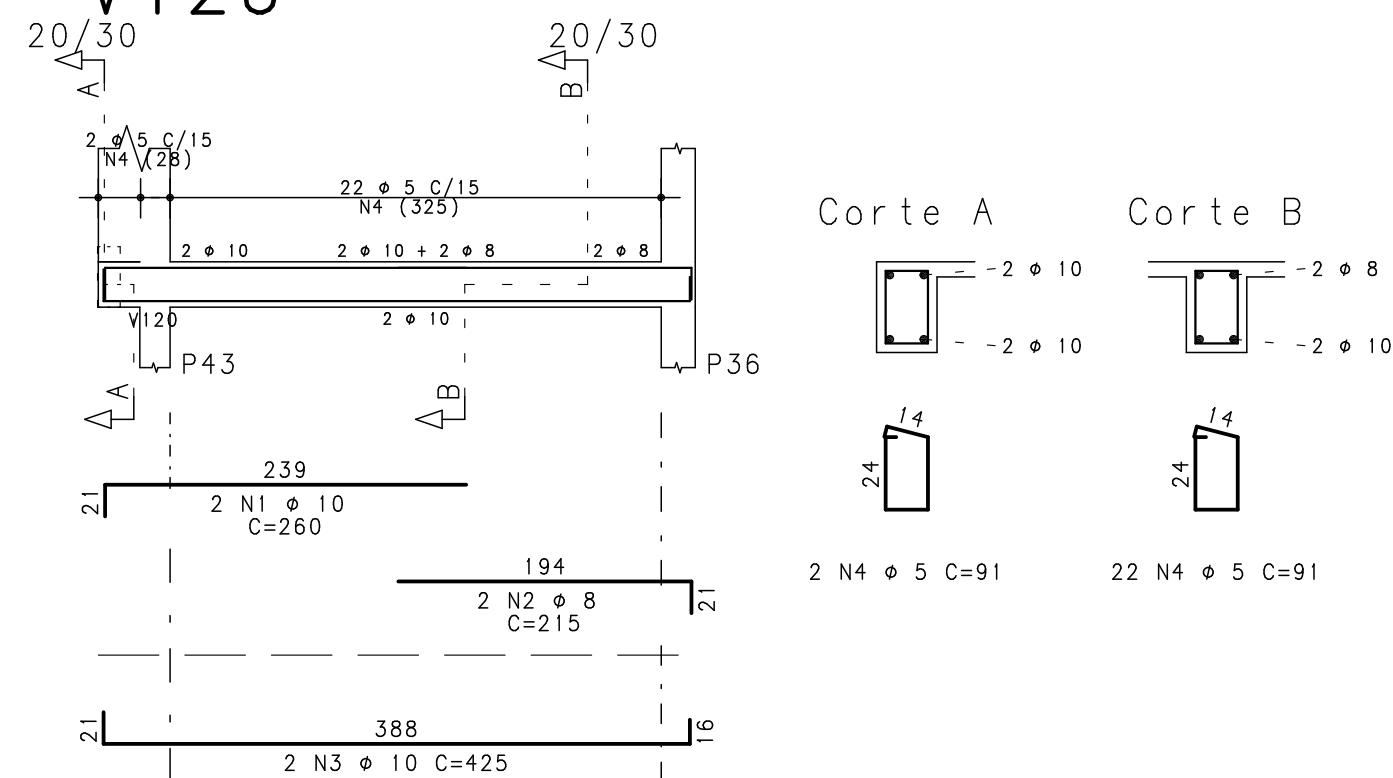
V124



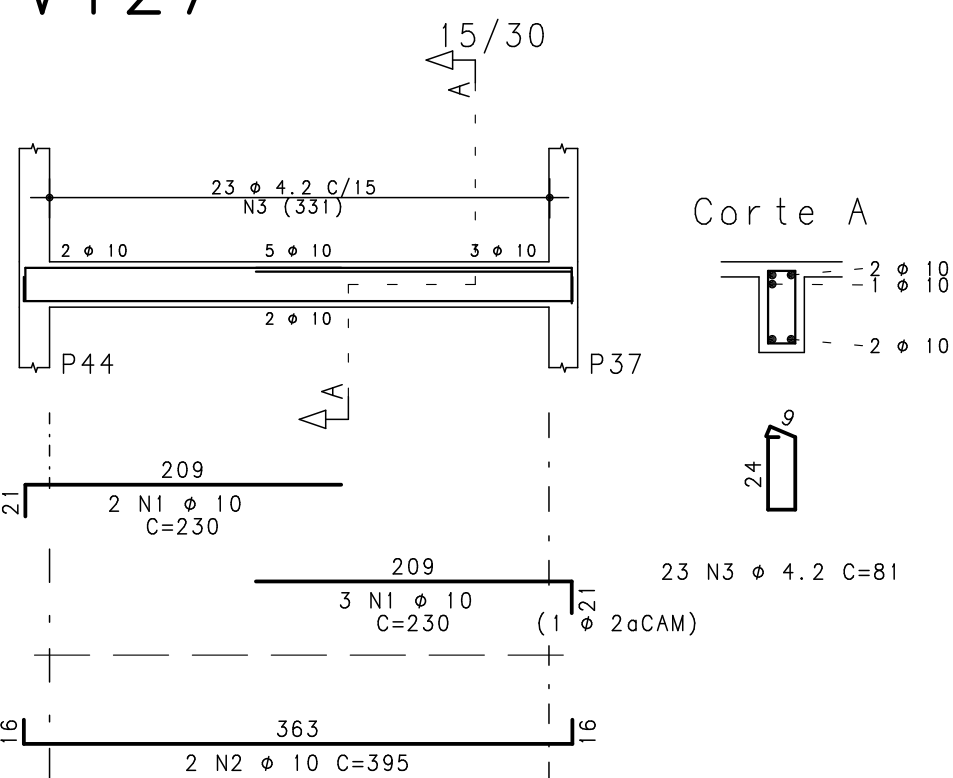
V125



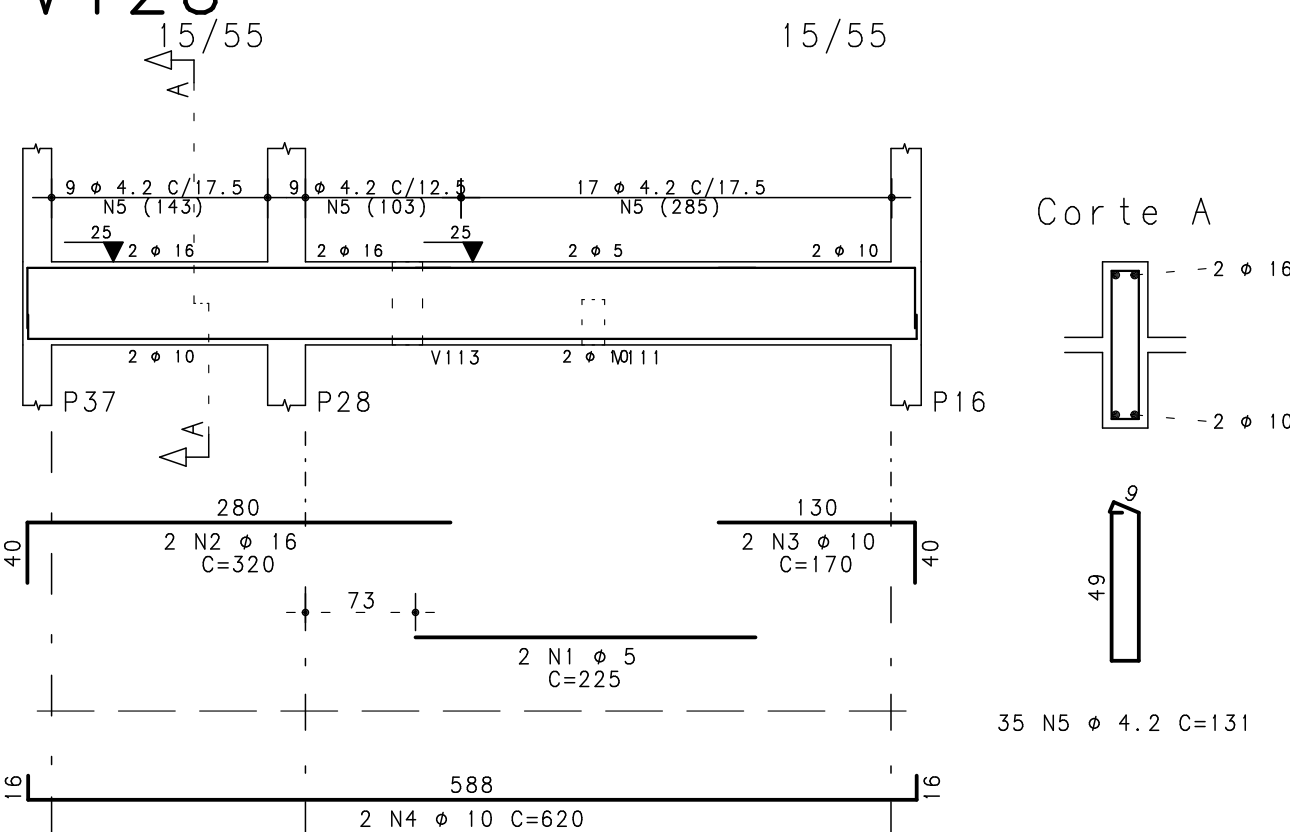
V126



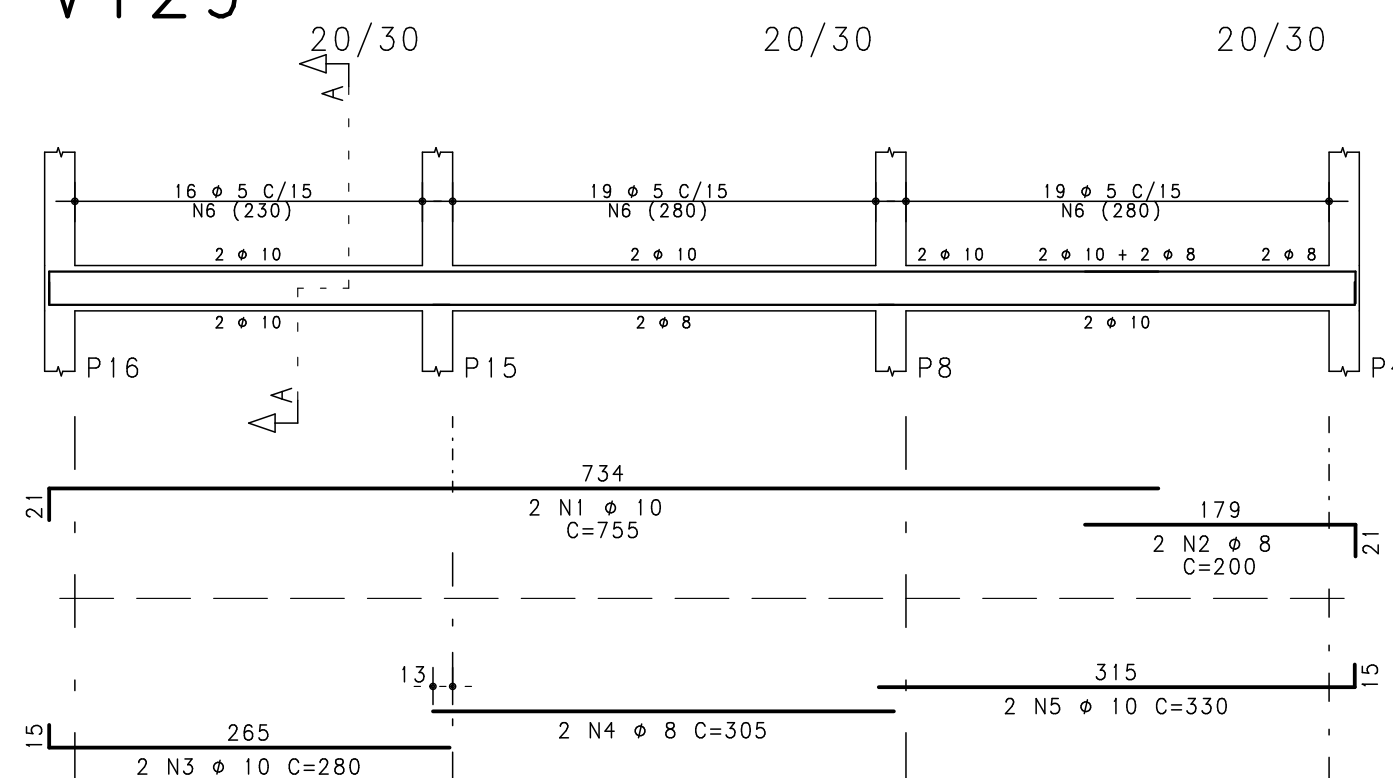
V127



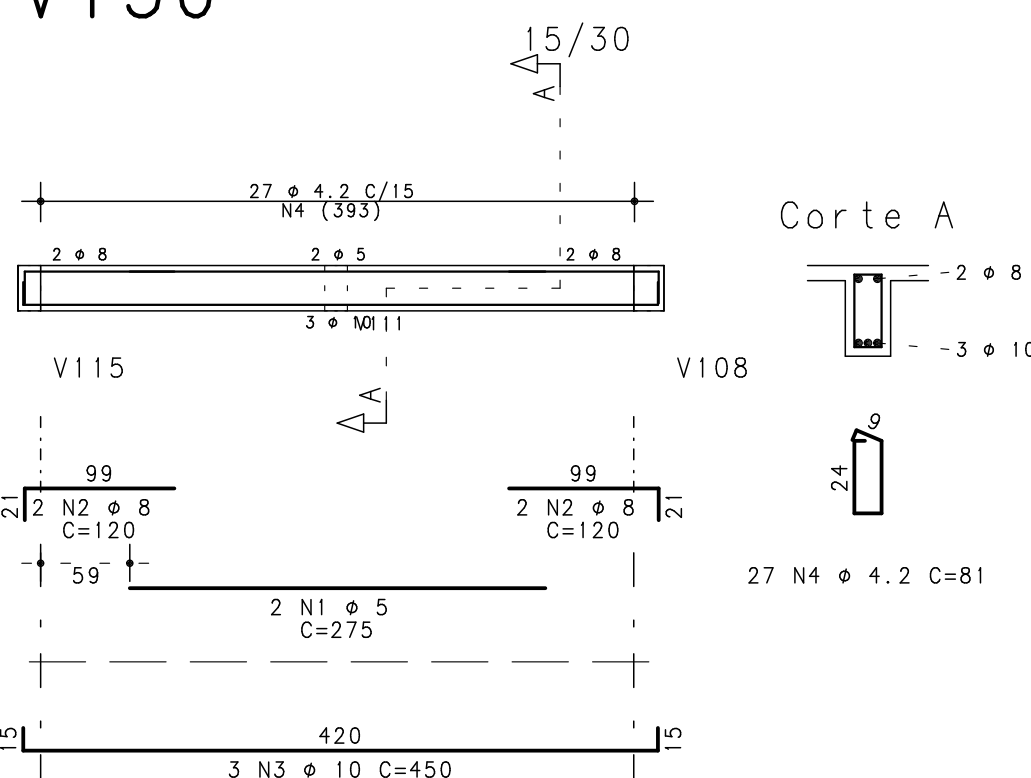
V128



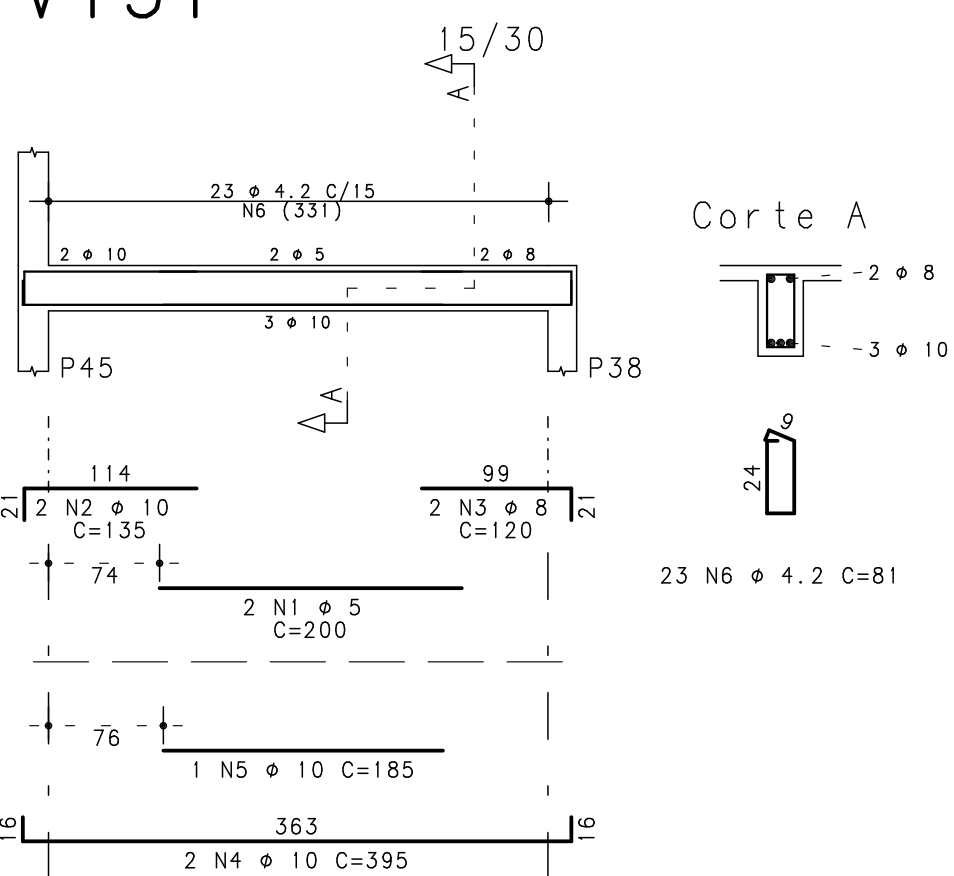
V129



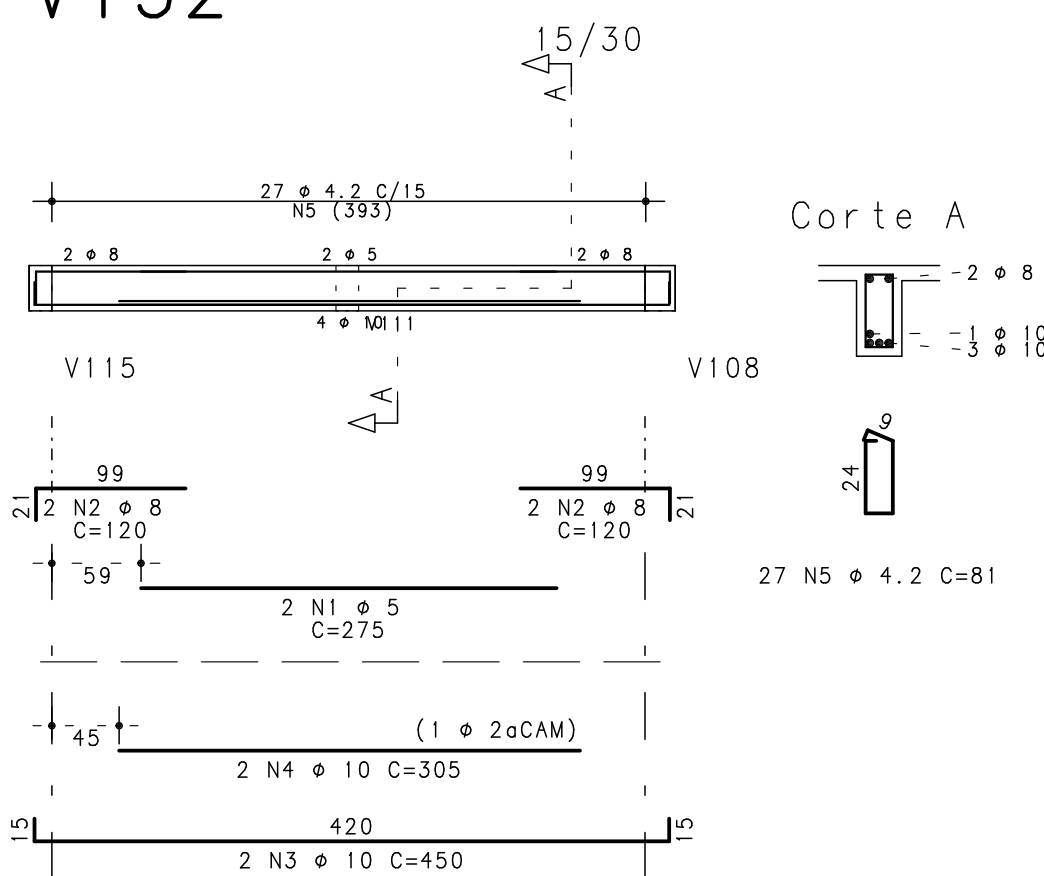
V130



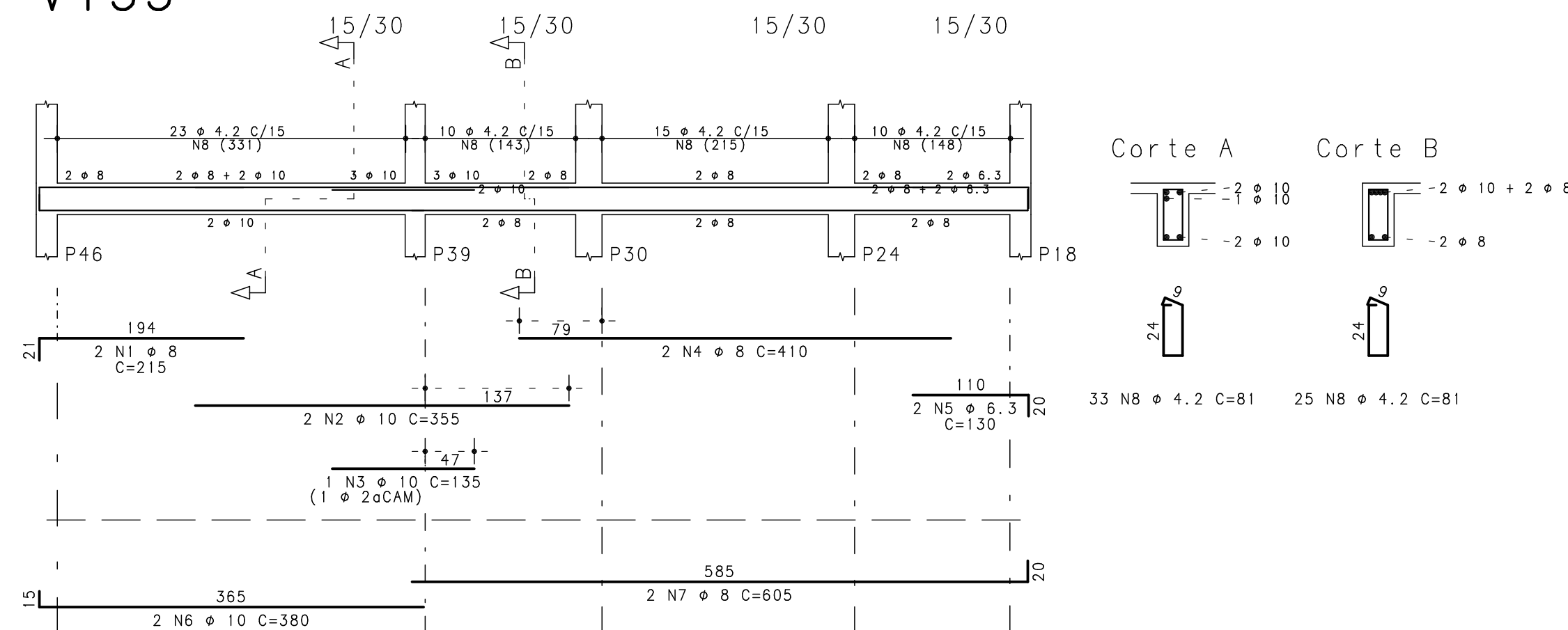
V131



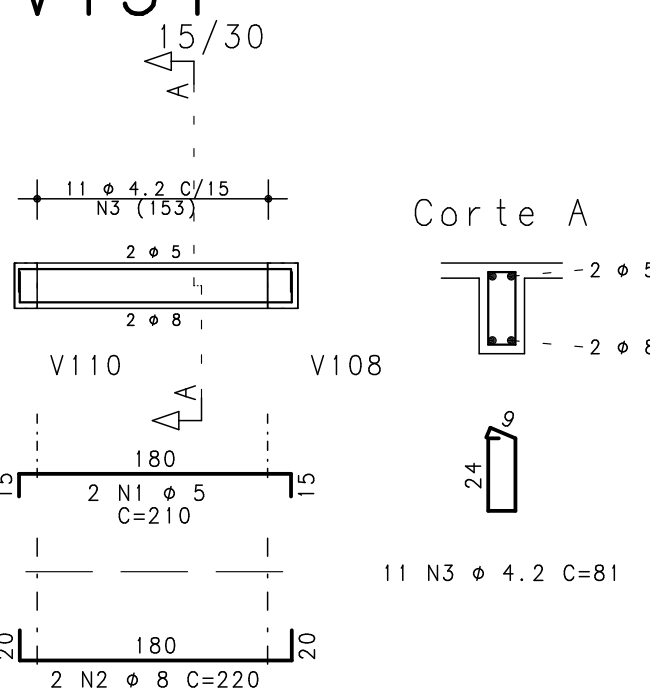
V132



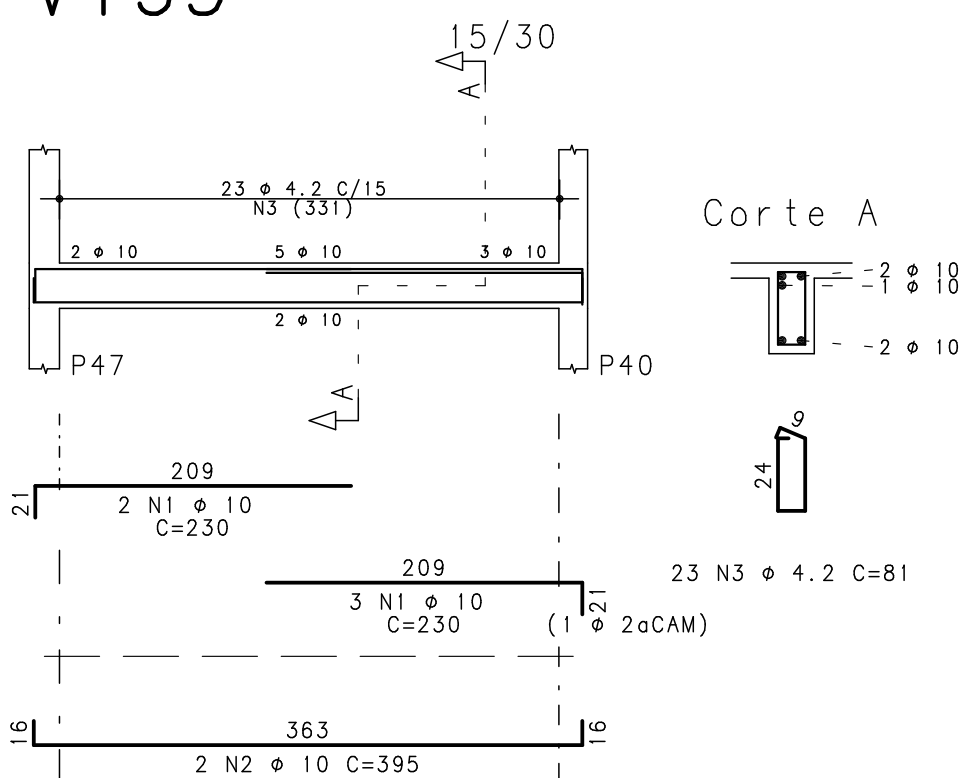
V133



V134



V135



	ACO	POS	BIT (mm)	QUANT	COMPRIMENTO	
					UNIT (cm)	TOTAL (cm)
V123	50A	1	10	3	270	810
	50A	2	10	1	325	325
	50A	3	10	2	870	1740
	50A	4	10	2	185	370
	50A	5	10	2	495	990
	50A	6	10	1	330	330
	50A	7	10	3	250	750
	60B	8	5	46	141	6486
	60B	9	5	3	71	213
	50A	10	10	4	117	468
V124	50A	1	8	4	200	800
	50A	2	10	2	355	710
	50A	3	8	2	655	1310
	60B	4	4.2	38	81	3078
V125	50A	1	8	4	200	800
	50A	2	10	2	355	710
	50A	3	8	2	655	1310
	60B	4	4.2	38	81	3078
V126	50A	1	10	2	260	520
	50A	2	8	2	215	430
	50A	3	10	2	425	850
	60B	4	5	24	91	2184
V127	50A	1	10	5	230	1150
	50A	2	10	2	395	790
	60B	3	4.2	23	81	1863
V128	60B	1	5	2	225	450
	50A	2	16	2	320	640
	50A	3	10	2	170	340
	50A	4	10	2	620	1240
	60B	5	4.2	35	131	4585
V129	50A	1	10	2	755	1510
	50A	2	8	2	200	400
	50A	3	10	2	280	560
	50A	4	8	2	305	610
	50A	5	10	2	330	660
	60B	6	5	54	91	4914
V130	60B	1	5	2	275	550
	50A	2	8	4	120	480
	50A	3	10	3	450	1350
	60B	4	4.2	27	81	2187
V131	60B	1	5	2	200	400
	50A	2	10	2	135	270
	50A	3	8	2	120	240
	50A	4	10	2	395	790
	50A	5	10	1	185	185
	60B	6	4.2	23	81	1863
V132	60B	1	5	2	275	550
	50A	2	8	4	120	480
	50A	3	10	2	450	900
	50A	4	10	2	305	610
	60B	5	4.2	27	81	2187
V133	50A	1	8	2	215	430
	50A	2	10	2	355	710
	50A	3	10	1	135	135
	50A	4	8	2	410	820
	50A	5	6.3	2	130	260
	50A	6	10	2	380	760
	50A	7	8	2	605	1210
	60B	8	4.2	58	81	4698
V134	60B	1	5	2	210	420
	50A	2	8	2	220	440
	60B	3	4.2	11	81	891
V135	50A	1	10	5	230	1150
	50A	2	10	2	395	790
	60B	3	4.2	23	81	1863

RESUMO ACO CA 50-60			
ACO	BIT (mm)	COMPR (m)	PESO (kg)
60B	4.2	263	29
60B	5	162	25
50A	6.3	3	1
50A	8	98	39
50A	10	225	139
50A	16	6	10
Peso Total		60B =	54 kg
Peso Total		50A =	188 kg



Rua Quinze de Novembro, 553/405
Pelotas - RS - CEP 96201-5000
Telefone: (51) 32291500
e-mail: fernando@simch.com.br
e-mail: paulo@simch.com.br

Fernando Petrucci Gigante
Eng. Civil - CREA-RS 45232

Paulo Rogério Maffini Simch
Eng. Civil - CREA-RS 78208

2			
1			
0			
Rev	Data	Autor	Assunto

CONCRETO fck = 250 kgf/cm2		SOBRECARGA PREVISTA		OBRA N.º 0001
CLIENTE SECRETARIA DA SAÚDE-PELOTAS				DES. N.º
OBRA UBS Sanga Funda				021
TÍTULO Nível 100 Vigas 3-4				REV. N.º
V123 / V124 / V125 / V126 V127 / V128 / V129 / V130 V131 / V132 / V133 / V134 V135				00
DATA 12/08/2015	ESCALA 1:50	DESENHO UBS-100-VIG-021-R00	COORD.	ENG.º